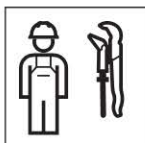




Installation Manual

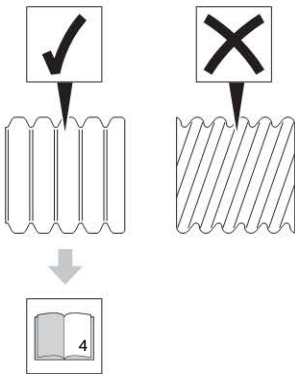
Montageanleitung
Instructions de montage
Istruzioni per il montaggio

**KNOW
HOW**
INSTALLED

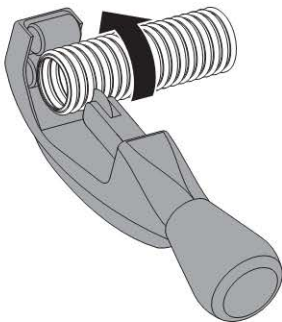




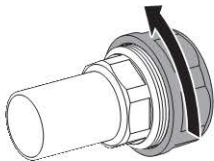
1



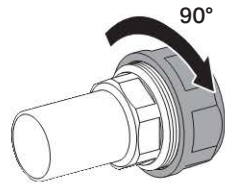
2



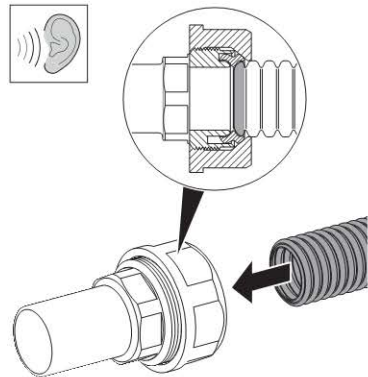
3



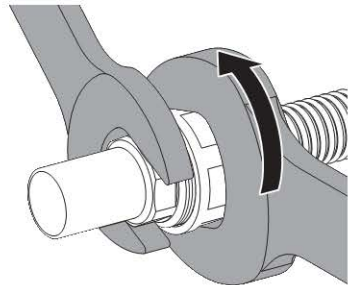
4

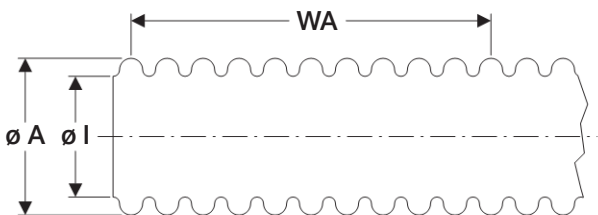


5



6





WA: Wellenabstand gemessen über 10 Wellen / Ridge distance measured across 10 ridges

Typ / Type	DN1	Art.-Nr. / Art. no.	ø A	ø I	WA	Betriebsdruck / Operating pressure [bar]	Eignung / Suitability
			[mm]	[mm]			
Aktarus	16		21.6	16.3	47	16	✓
	20		26.6	20.3	50	10	✓
	25		32.2	25.4	54	10	✓
Armacell Armaflex DuoSolar	16		21.4	16.3	48	16	✓
	20		26.7	20.5	49	10	✓
	25		31.8	25.4	51	13	✓
AZ Industrietechnik	16	WR04-16	20.0	15.7	56		
	20	WR04-20	25.0	19.7	64		
Emin Teknik EF02	16	E10 142 016	21.5	16.3	47	11	✓
	20	E10 142 020	26.6	20.7	52	10	✓
	25	E10 142 025	32.0	25.8	52	10	✓
Eurotis TFA	3/4"	TFA34	20.0	15.8		15	
	1"	TFA25	25.0	20.3		15	
	1 1/4"	TFA32	25.0	20.3		15	
Famas S.A. FPW	16	FPW	21.2	16.3		10	✓
FPT Systems PW	16	PW016 AFL	20.6	16.6	51		(✓)
	20	PW020 AFL	26.3	21.7	51		✓
KUZUFLEX KZ110	16	KZ 110 WB	21.4	16.5	47	8	✓
	20	KZ 110 WB	26.7	20.5	54	11	✓
	25	KZ 110 WB	31.7	25.6	53	8	✓
KWS Industrie KW211BO	16		21.4	16.3	48		✓
	20		26.7	20.4	49		✓
	25		31.9	25.7	53		(✓)

Typ / Type	DN1	Art.-Nr. / Art. no.	ø A	ø l	WA	Betriebsdruck / Operating pressure [bar]	Eignung / Suitability
			[mm]	[mm]			
Meibes Inoflex	16		21.3	16.6	55	16	✓
KUZUFLEX KZ110	16	KZ 110 WB	21.4	16.5	47	8	✓
	20	KZ 110 WB	26.7	20.5	54	11	✓
	25	KZ 110 WB	31.7	25.6	53	8	✓
Paktermo	16		21.4	16.3	47	16	✓
	20		26.7	20.5	50	10	✓
	25		31.8	25.4	55	10	✓
Rattay HR I/S-W	16	HR I/S-W-016	21.4	16.3	46	16	✓ ¹⁾
	20	HR I/S-W-020	26.7	20.4	50	10	✓
	25	HR I/S-W-025	31.8	25.4	52	10	✓
RiFlex EWR	16	EWR16			46	16	✓
	20	EWR20			50	10	✓
	25	EWR25			52	10	(✓)
Solar MF 011	16	MF 011 S00	26.8	20.2	36.8	6	✓
Solar MF 012	16	MF 012 S00	21.4	16.3	47	16	✓
	20	MF 012 S00	26.7	20.5	48	10	✓
Solar MF 015	16	MF 015 S00	21.2	16.9	53	15	✓
	20	MF 015 S00	26.4	20.5	54	8	✓
Solar MF 016	16	MF 016 S00					
	20	MF 016 S00			64.5	8	
Solartechnica TUBI INOX 316 L	16		21.4	16.5	50	11	✓
	20		26.7	20.5	50	14	✓
	25		31.7	25.6	53	10	(✓)
Thermafex Flexalen HT	16	SL13HDN2x16	21.4	16.3	48	16	✓
	20	SL13HDN2x20	26.7	20.5	55	10	✓
Thermafex Flexalen Solarlight TX	16	SL13TDN2x16	21.4	16.3	48	16	✓
	20	SL13TDN2x20	26.7	20.5	49	10	✓
	25	SL13TDN2x25	31.8	25.4	56	10	✓
Torgen Switzerland FMH.840	16	FMH.840.016	21.4	16.3	36	16	
	20	FMH.840.020	26.7	20.5	43	10	
	25	FMH.840.025	31.8	25.4	37	10	

Typ / Type	DN1	Art.-Nr. / Art. no.	ø A [mm]	ø l [mm]	WA [mm]	Betriebsdruck / Operating pressure [bar]	Eignung / Suitability
Waterway WW WR	16	ww203000	20.2	15.6		16	
	20	ww204000	25.5	20.1		10	
	25	ww205000	31.7	27.0		10	
Waterway WW WS	16	ww202900	21.4	16.3	48		✓
	20	ww203900	26.7	20.4	48		✓
	25	ww204900	31.9	25.4	53		✓
WATTS Insulation EW	16	125EWR016	21.4	16.6– 17.5	48		✓
	20	125EWR020	26.0– 26.3	20.7– 21.5	50– 54		(✓)
	25	125EWR025	31.4– 31.8	25.9	52– 56		(✓)
Witzenmann / HYDRA RS 321	16	RS321S00	22.0	16.2		6	
	20	RS321S00	26.8	20.2	29	4	
	25	RS321S00	32.2	25.1		5	
Witzenmann / HYDRA RS 331	16	RS331S00	21.7	16.2	36	8	
	20	RS331S00	26.7	20.2	37	5	
	25	RS331S00	32.2	25.5		4	
Witzenmann / HYDRA RS 341	16	RS341S00	21.4	16.3	46.4	13	✓
	20	RS341S00	26.5	20.7	48	20	✓
	25	RS341S00	31.7	25.8	53	14	✓
Witzenmann / HYDRA RSM 351	16	RSM351S00	21.2	16.8	55		✓
	20	RSM351S00	26.4	26.4	55		✓
	25	RSM351S00	31.6	31.6	54		✓
Witzenmann / HYDRA IX 331	16	IX331S00	20.4	16.5		6	
	20	IX331S00	24.9	20.6	65	6	
Würth	16		20.0	15.7		22	
	20		25.0	19.7		18	(✓)
	25		33.0	26.5		15	

1) Ab Produktionsdatum Juli 2010 / As of manufacturing date July 2010

- ✓ Für Verschraubung freigegeben / Released for screw connection
- (✓) Mit Einschränkung für Verschraubung freigegeben. Das Rohr rastet nicht ein, die Verbindung ist aber dicht. Beim Einstecken muss die Einstecktiefe beachtet werden / Released for screw connection with restriction. Pipe will not engage, but connection is leakproof. Observe the insertion depth when inserting the pipe

Geberit International AG
Schachenstrasse 77
CH-8645 Jona

T +41 55 221 63 00
F +41 55 221 63 16
documentation@geberit.com

→ www.geberit.com